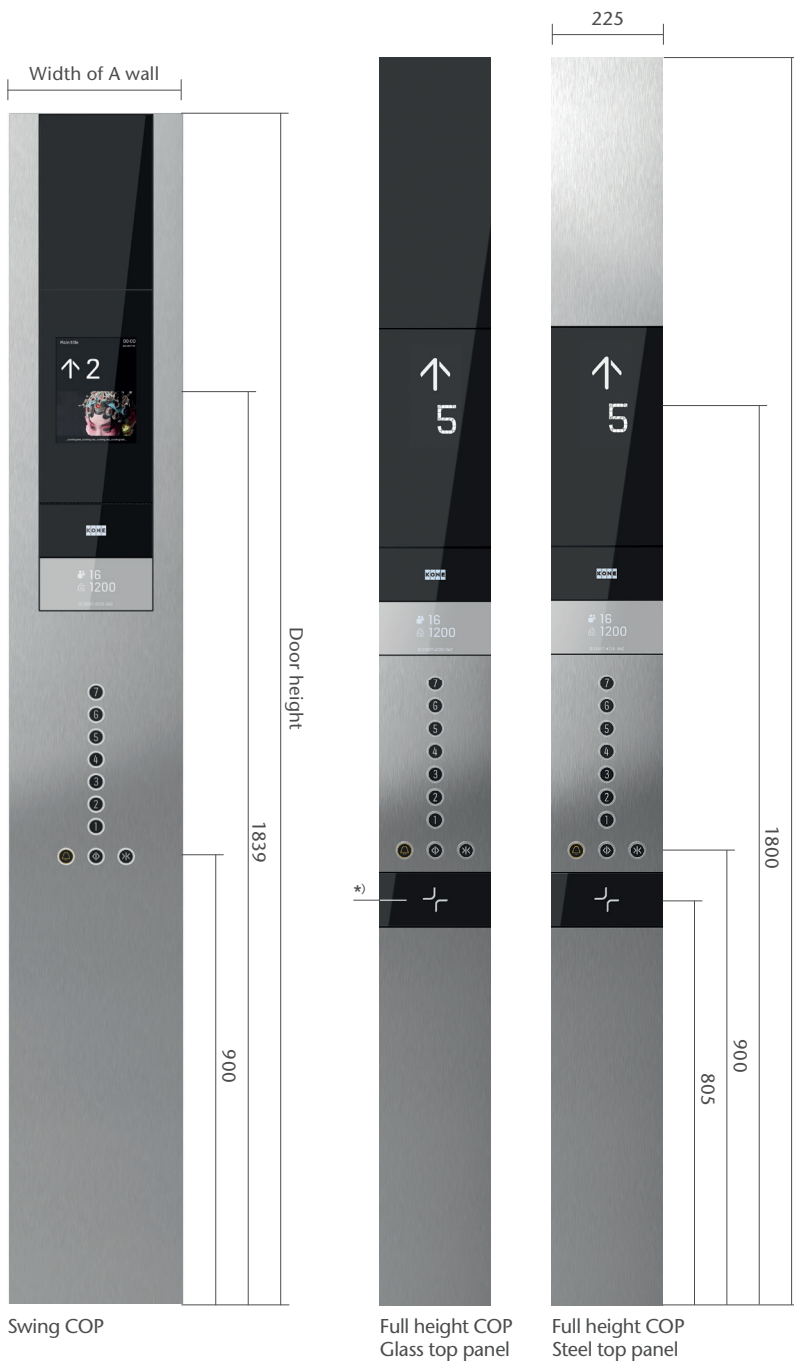




KONE SIGNALIZATION

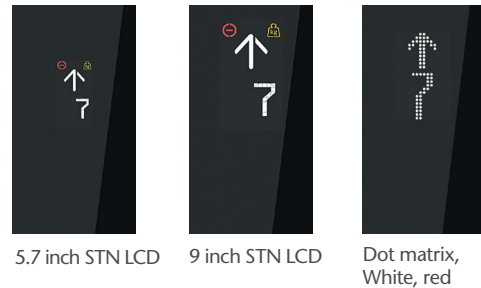
KDS330

CAR OPERATING PANEL (COP)



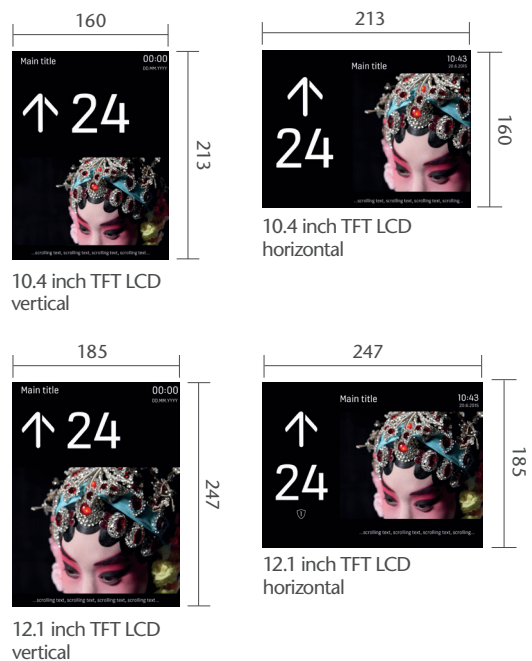
*ACS reader panel is optional

KDS 330 DISPLAYS



TFT LCD DISPLAYS

Only available for Swing COP



LANGUAGE

- English
- Simplified Chinese
- Traditional Chinese

- Key switches are also available
- COP faceplate is flush mounted

BUTTONS



Flush mounted, collar finishing silver



Surface mounted, collar finishing silver brushed stainless steel



Other button options available for various code requirements

BRILLE AVAILABLE AS AN OPTION



Flush mounted, mirror polished

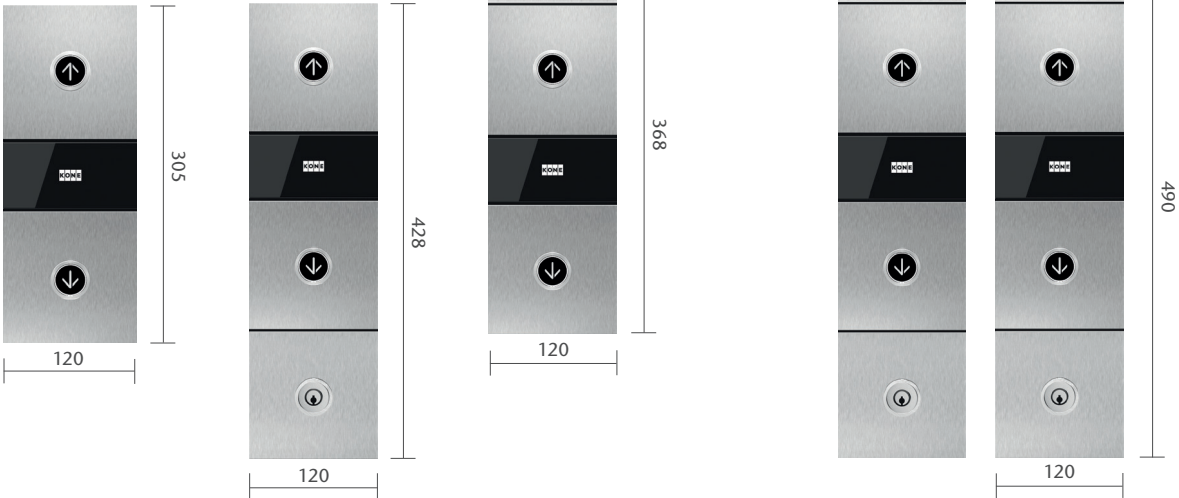


Surface mounted, mirror polished

LANDING DEVICES

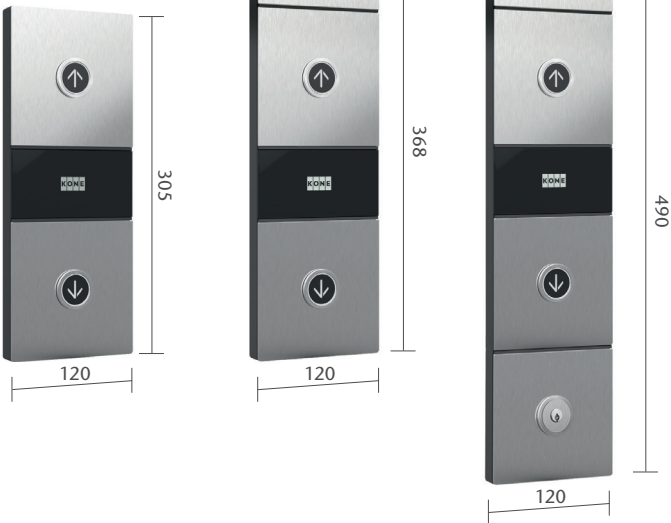
LANDING CALL STATION (LCS)

Flush mounted



Surface mounted

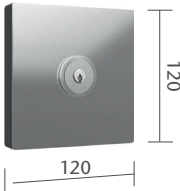
Thickness 21 mm



LOCK MODULE

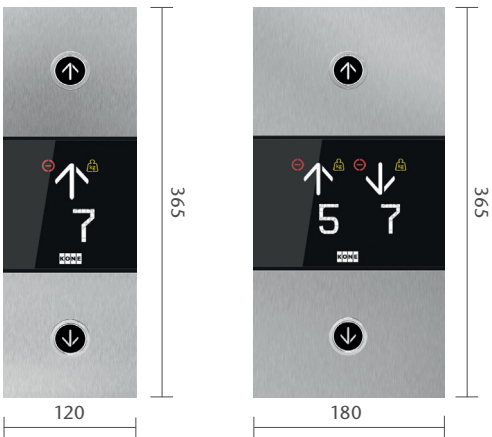
Surface mounted

Thickness 21 mm



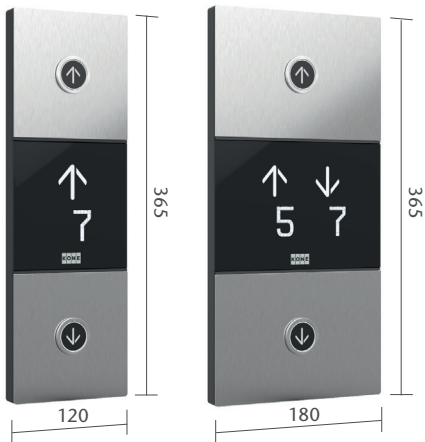
LANDING CALL STATION WITH INDICATOR (LCI)

Flush mounted



Surface mounted

Thickness 21 mm



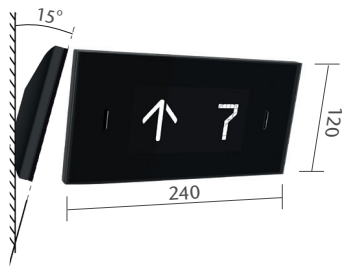
HALL INDICATOR (HI)

Flush mounted



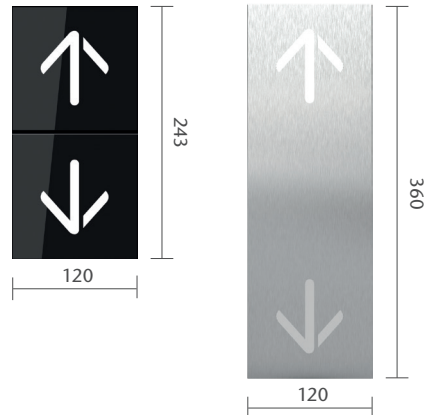
Surface mounted

Thickness 33 mm



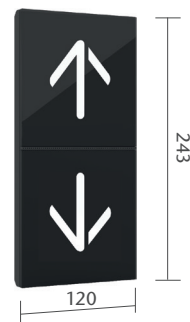
HALL LANTERN (HL)

Flush mounted

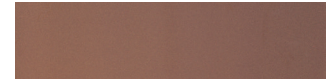


Surface mounted

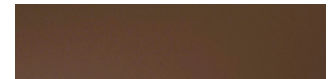
Thickness 29 mm



COP AND LANDING DEVICE FACEPLATE FINISHING



Copper satin stainless steel



Copper mirror stainless steel*



Silver brushed stainless steel



Silver mirror polished stainless steel



Indirect silver stainless steel



Dark gray brushed stainless steel



Black mirror stainless steel*



Golden brushed stainless steel*



Golden mirror polished stainless steel*



Indirect golden stainless steel*

* Available for swing COP only

DISPLAY TYPE/COLOR

- Segmented LCD: White
- Dot-matrix: White, red

LANGUAGE

- English
- Simplified Chinese
- Traditional Chinese

NOTE: LCD displays have icons, language options are for dot matrix

KONE CORPORATION

www.kone.com